

ISSN 1943-6548

# base line



*a newsletter of the*  
**Map and Geospatial Information Round Table**

## TABLE OF CONTENTS

- 3 From the Chair**
- 5 On the Cataloging/Cataloguing Front**
- 7 Digital Mapping**
- 9 MAGIRT EXEC Board Meeting – Minutes of Sept 30**
- 13 Looking for Leadership Announcement**
- 15 Great Moments in Map Librarianship**

<http://www.ala.org/rt/magirt>

**Volume 40, Number 5**  
**October 2019**



[base line](#) is an official publication of the American Library Association's Map and Geospatial Information Round Table (MAGIRT). The purpose of base line is to provide current information on cartographic materials, other publications of interest to map and geography librarians, meetings, related governmental activities, and map librarianship. It is a medium of communication for members of MAGIRT and information of interest is welcome. The opinions expressed by contributors are their own and do not necessarily represent those of the American Library Association and MAGIRT. Contributions should be sent to the appropriate editor listed below.

**Editor:** John A. Olson  
Government and Geo-Information Librarian  
Syracuse University  
Tel: 315-443-4818 E-mail: [jaolson@syr.edu](mailto:jaolson@syr.edu)

**Distribution Manager:** Mike Smith  
Subject Specialist for Maps, California Gov Info, GIS  
Coordinator, UCSD  
Tel: 858/534-1248 E-mail: [mls003@ucsd.edu](mailto:mls003@ucsd.edu)

**Cataloging Editor:** Tammy T. Wong  
Cartographic Materials Cataloger  
Geography and Map Division, Library of Congress  
Tel: 202/707-6735 E-mail: [twon@loc.gov](mailto:twon@loc.gov)

**Digital Mapping Editor:** Carolyn Hansen  
Head of Cataloging & Metadata Services  
University Libraries, Stony Brook University  
Tel: 631/632-7113 E-mail: [hansen.caro@gmail.com](mailto:hansen.caro@gmail.com)

**New Maps and Books Editor:** Open

**Membership and Marketing Committee Chairperson:**  
Maggie Long  
Special Collections Cataloger  
Wesleyan University  
E-mail: [longmml88@gmail.com](mailto:longmml88@gmail.com)

**Advertising Rates: For one issue: full page \$100; half page \$50; quarter page \$25. Opposite "Great Moments in Map Librarianship": full page \$150; half page \$80; quarter page \$40.**

Send graphics as an: .AI, .PDF, .JPG, or .GIF file and 300 dpi or better. Send text documents in: Cambria 12 point. Send files as an email attachment to the editor. Submissions may be edited and re-formatted to the extent necessary to fit the size and space allotted for each issue. Final full-page size is 8 x 10 inches. Advertisers will be invoiced. Please make payments to the MAGIRT Treasurer, payable in U.S. dollars to ALA-MAGIRT.

**base line** is published electronically six times a year: in February, April, June, August, October, and December. All older issues of base line are now freely available on the MAGIRT website.

Members of MAGIRT can access **base line** as a benefit of their membership.

American Library Association personal and institutional members may choose MAGIRT membership for \$20.00 (personal) or \$60.00 (institutional) by so advising the American Library Association, 50 W. Huron St., Chicago, IL 60611.

MAGIRT OFFICERS:

**Chairperson:**  
Iris Taylor  
Senior Cataloging Specialist  
Geography and Map Division, Library of Congress  
Tel: 202/707-8529 E-mail: [itaylor@loc.gov](mailto:itaylor@loc.gov)

**Vice-Chairperson (Chair-Elect):**  
Sierra Laddusaw  
Maps Curator, Digital Scholarship Curator  
Map & GIS Library – Cushing Memorial Library & Archives  
TAMU 5000  
E-mail: [sladdusaw@library.tamu.edu](mailto:sladdusaw@library.tamu.edu)

**Secretary:**  
Paige Andrew  
Cartographic Resources Cataloging Librarian  
Pennsylvania State University  
E-mail: [pga2@psu.edu](mailto:pga2@psu.edu)

**Treasurer:**  
Marguerite Ragnow, Ph.D.  
Curator, James Ford Bell Library  
University of Minnesota  
Tel: 612-624-6895 E-mail: [ragn0001@umn.edu](mailto:ragn0001@umn.edu)

**Assistant Treasurer:**  
Pete Reehling  
Digital Scholarship Librarian  
Digital Scholarship Services – USF Libraries  
E-mail: [reehling@hotmail.com](mailto:reehling@hotmail.com)

**Past Chairperson:**  
Tammy T. Wong  
Cartographic Materials Cataloger  
Geography and Map Division, Library of Congress  
Tel: 202/707-6735 E-mail: [twon@loc.gov](mailto:twon@loc.gov)

<http://www.ala.org/rt/magirt>

© American Library Association 2019

312.944.6780

Published by the Map and Geospatial Information Round Table



## FROM THE CHAIR

IRIS TAYLOR

LIBRARY OF CONGRESS

This is the perfect time of the year with the leaves in bright vivid colors of red/yellow/orange and a slight chill in the air! Autumn is here! It has been a most enjoyable three months in this position and the excitement has not worn off! MAGIRT's Executive Board members continue to meet virtually and work hard on a variety of topics. I want to take this opportunity to thank them and to share with you a few of our discussions. Some include: enhancing the virtual meeting experience; increasing visibility with the use of our ALA Website as well as improving our website and social media; re-igniting webinar presentations; membership and marketing strategies; more members' participation; and MAGIRT's 40<sup>th</sup> Year Anniversary Celebration. In addition, an updated officer, committees, liaisons, positions list for MAGIRT is available.



Let us welcome Craig Hagget to MAGIRT! He is serving as chair of the Map Collection Management Discussion Group. In addition, Craig has volunteered to serve as an assistant webmaster! Recently, Craig called for discussion topics for the upcoming January 2020 Midwinter meeting. Contact him for more information. The Chair of the Publication Committee is still available. Send me an email if you are interested.

Vice Chair Sierra Laddusaw and our Webmaster Colleen Cahill are currently working to fine-tune a project for the Emerging Leaders Team project on "*Website enhancements featuring blogs that link to our publications and improve communication across all platforms.*" Tim Kiser volunteered to represent MAGIRT on the ALA Jury Program (a two-year term). Maggie Long, Membership Committee Chair, is collaborating with our ALA liaison on creating standardized membership letters for the Round Table Organizations at American Library Association (ALA).

Most of MAGIRT's programming elements for events are in place. The schedule for the upcoming January 2020 Mid-Winter Meeting in Philadelphia, PA was submitted online in a timely manner. When the room assignments and meeting specifics are available from ALA the information will be disseminated. Sierra has begun initial planning for ALA Mid-Winter and Annual fieldtrip/social gatherings and MAGIRT's 40th Anniversary. Contact Sierra, if you have any suggestions.

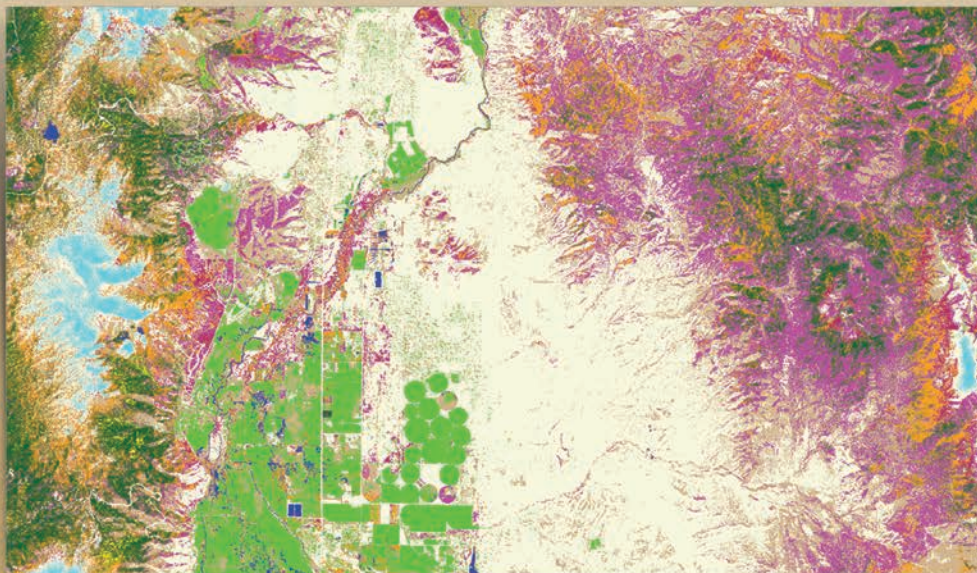
Julie Sweetkind-Singer a member of WAML's Education Committee, offered to coordinate a collaboration with WAML and MAGIRT for two webinar presentations of interest to the geographic community: 1) *2020 Census Update by Deirdre Bishop (Census Bureau)* and 2) *2022 National Spatial Reference System Modernization by Dr. Dru Smith (National Geodetic Survey)*. More information will be provided on these and upcoming webinar presentations.

(Continued on p. 13)

Global Aerial/Satellite Imagery & Value-Added Remote Sensing Solutions  
Extensive Foreign Mapping Datasets – Off-the-Shelf & Custom



**SATELLITE & AERIAL IMAGERY/PROCESSING**  
**DIGITAL ELEVATION MODELS • VECTOR FEATURE EXTRACTION**  
**SPECTRAL CLASSIFICATION & OBJECT-BASED IMAGE ANALYSIS**



*Object-based vegetation mapping of a Western US county from RapidEye 5m 5-band multi-spectral satellite imagery to classify wildland fire fuel categories.*

## **GLOBAL TOPOGRAPHIC MAPS & NAUTICAL CHARTS**

Discounted countrywide DRG, vector, DEM and paper map sets

## **MAP LIBRARY SERVICES**

Large-format scanning, geo-referencing, metadata & index creation

*Contact us for New Datasets & Academic Discounts*

AIRBUS DEFENCE & SPACE Image Partner • DigitalGlobe Distribution Partner • Authorized Valtus Reseller • Authorized Intermap Distributor  
USGIF Member • USGS Business Partner • Esri® Business Partner • Planet Labs/RapidEye Direct Distributor

**tel +1.303.790.9730 • fax +1.303.790.9734**  
**sales@landinfo.com • www.landinfo.com**

# ON THE CATALOGING/CATALOGUING FRONT

TAMMY WONG

LIBRARY OF CONGRESS

## Recent activities in RDA and BIBFRAME

IFLA Satellite Meeting on RDA 2019

IFLA's Cataloguing Section, IFLA's Committee on Standards and European RDA Interest Group (EURIG) organized a satellite meeting on RDA, hosted by the Central Library of Aristotle University in Thessaloniki, Greece, on August 21, 2019.

Slides from presentations are now available, with kind permission of the presenters.

One of the presentations was a video by Kathy Glennan, which can be viewed [here](#)

- [Welcome slide](#)
- [RDA: background, organization and presentation of new version / Chris Oliver](#)
- [RDA and internationalization / Ahava Cohen](#)
- [The new version of RDA / Gordon Dunsire](#)
- [RDA : application profiles / Renate Behrens](#)
- [Greek translation of RDA Reference / Maria Aslanidi](#)
- [Babylonian confusion of languages regardless of standardization? / Christian Aliverti](#)
- [RDA Toolkit : the facilities within the new version / Gordon Dunsire](#)
- [RDA in Italy / Mauro Guerrini](#)
- [The Swedish implementation / Katarina Synnermark](#)
- [How does LC within BIBFRAME intend to accommodate RDA 3R? / Susan Morris](#)
- [Library of Congress BIBFRAME webcasts and presentations](#)
- [BIBFRAME Update Forum at the ALA Annual Conference 2019](#)

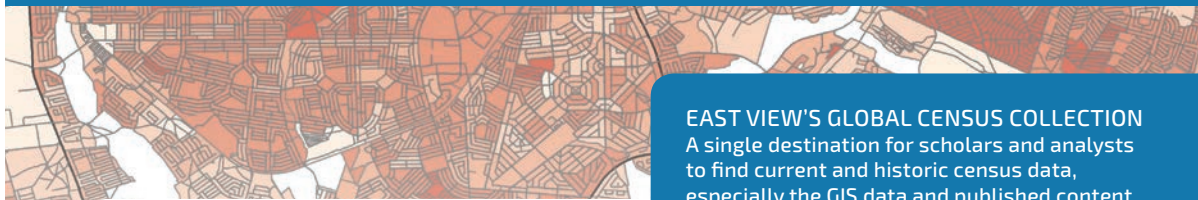
[BIBFRAME Goes International](#), April 2, 2019 - BIBFRAME, a Library of Congress data model for bibliographic description designed to replace the MARC standards, is seeing activity around the globe. In this presentation, Library staff review current activity of the BIBFRAME model on the international scene, including how Europe is exploring BIBFRAME, the interest in other parts of the globe and a large new project closer to home. Included are developments in the roles being played in the support of BIBFRAME by the Program for Cooperative Cataloging and the Italian book and metadata supplier, Casalini Libri.



## INTRODUCING

# GLOBAL CENSUS DATA FROM EAST VIEW

A new initiative to collect current and past GIS census data from around the world, along with all published results, supporting questionnaires and other census ephemera



**EAST VIEW'S GLOBAL CENSUS COLLECTION**  
A single destination for scholars and analysts to find current and historic census data, especially the GIS data and published content that accompanies the release of a census

EAST VIEW'S GLOBAL CENSUS COLLECTION is a robust resource for authoritative census data from around the world. When initially acquired, census data is stored in a complex database structure. The global census collection simplifies access to this complicated material, formatting each census into an easy-to-use geodatabase and providing comprehensive metadata and user guides. In addition, all published volumes will be scanned and discoverable, along with supporting questionnaires and other ephemera.

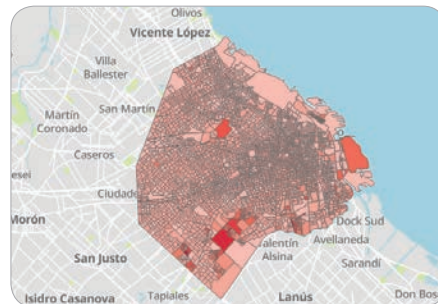
East View already has 28 countries available, including Japan, South Africa, much of Latin America and several former Soviet states, with new content and countries being added on a regular basis. Users may purchase census data by country or in regional packages.

### GIS CENSUS PRODUCTS INCLUDE:

- **Geodatabase**
  - Intuitive organization of census data
  - Administrative boundary vector data
- **Shapefiles**
  - All vector and census data in ESRI Shapefile format
- **Census Guide**
  - Detailed instructions on how to query and visualize data
  - Detailed descriptions of census variables
- **Original Census Documentation**
  - Delivered in native format
- **Metadata**
  - Full attribute level metadata in FGDC ISO format

#### WANT MORE INFORMATION?

Visit [www.eastview.com/gca](http://www.eastview.com/gca) or contact us at [info@eastview.com](mailto:info@eastview.com)



### ADDITIONAL CENSUS MATERIALS

Along with GIS census data, East View also offers official census publications and related source materials. While the availability and type of materials will vary by country, examples of typical materials include:

- Official published results
- Census methodology
- Questionnaires
- Maps



EASTVIEW.COM | GEOSPATIAL.COM | INFO@EASTVIEW.COM

## DIGITAL MAPPING

Carolyn Hansen

STONY BROOK UNIVERSITY

This month's Digital Mapping column will focus on portals and applications featuring historical maps. These resources are some of my favorites to use with students; they provide an interesting entry into publishing in the handpress period, innovations in map-making techniques, and the evolution of urban landscapes. Also, they are simply beautiful artifacts of the past.

### Old Maps Online

<https://www.oldmapsonline.org/>

Described as a "search engine for historical maps," *Old Maps Online* links to repositories around the world who have contributed their maps to the site. This is a collaborative project that was originally created by Klokan

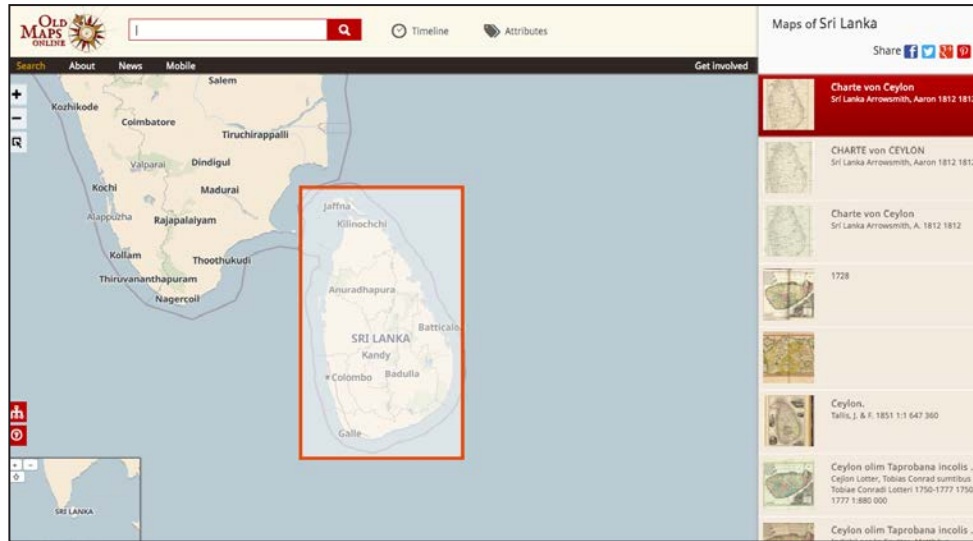
Technologies GmbH and the Great Britain Historical GIS Project based at the University of Portsmouth. The site's retrieval system is powered by [MapRank Search](#) software, which was developed initially for the [Swiss Kartenportal.CH](#) project. Institutions may contribute their public domain maps to the site and participating institutions include the David Rumsey Map Collection, the British Library, the Moravian Library, Land Survey Office Czech Republic, and the National Library of Scotland. *Old Maps Online* currently has approximately 400,000 maps indexed on its site.



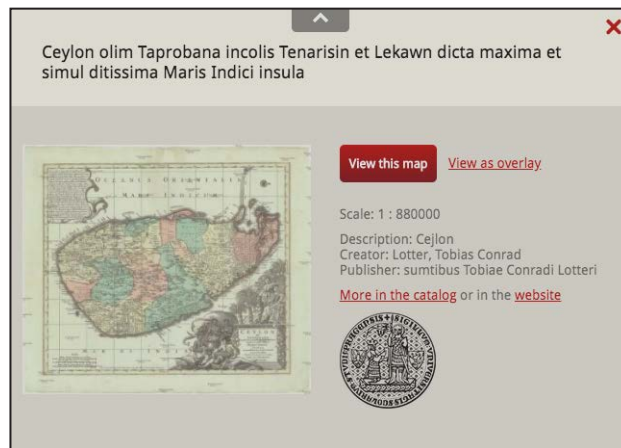
On the site's main landing page, users are given a choice to "Find a place" or "Browse the old maps." I chose the find option, which opens a free-text search box. I typed in "Sri Lanka" and a new page opened with my target area highlighted in red. The application allows you to zoom in on the target area for further refinement, and you are also presented with a location map in the lower left hand corner of the screen as well as a selection of historical maps for your target geographic area on the right. At the top of the screen, you can click on a timeline feature that opens with a timeline that allows you to limit your search by date range. There is also an attribute icon that opens a search refinement box with options to limit your search by title, author, and map scale.

After I clicked on a thumbnail of a historical map, a new window opened with provides a brief description of the map with links to the holding institution's catalog record and digital image for the map. Since *Old Maps Online* is not an image repository, access to the full-size image is dependent on the stability of the holding institution's links; more than once, when I tried to look at full-size image, I encountered broken links.

**Below:** Screen after typing “Sri Lanka” in the main search box.



**Below:** Basic metadata and thumbnail with links to the holding repository.



If you choose the “Browse the old maps” option on the main search page, a new window opens with the same content as if you chose the “Find a place” option, although the geographic selection defaults to your current location. It would be interesting if a browse option was available based on map type or genre, although this would require more metadata inputted from hosting repositories and more standardization on the part of the site’s maintainers. I would also like the ability to browse by contributing institution; an icon for the hosting repository is given when you click on a map thumbnail but the icon is not hyperlinked.

The site is easy to use and has a clean, pleasing interface. Finding historical maps from multiple institutions has been difficult in the past due to a lack of aggregator, which *Old Maps Online* now provides. I particularly liked that the site provides visibility for collections at smaller institutions worldwide and doesn’t require a high metadata threshold for joining. Although there is a trade-off in searching capabilities due to the limited metadata, I think the site is still a win-win. Additionally, mobile version of the site are available for both iPhone and Android, which is fantastic. Go check it out!





# Minutes for MAGIRT Executive Board/Membership Meeting

September 30, 2019

Time: September 30, 2019 2:00-3:00 PM (ET)

Location: Virtual (Zoom Meeting)

Attendees: Iris Taylor (Chair), Tammy Wong (Past Chair), Sierra Laddusaw (Vice Chair), Abbey Lewis (Publications chair), Craig Haggitt (DG Leader), Joy Suh (DG Leader), Colleen Cahill (Webmaster), Marguerite Ragnow (Treasurer), Paige Andrew (Secretary)

## 1. Call to order

Iris called the meeting to order at 2 p.m.

## 2. Call for changes to Agenda (Iris)

Iris asked for any changes to the agenda. None heard so we followed the agenda for today's meeting.

## 3. Secretary-- Minutes from August 2019 (Paige)

Paige asked for any changes or updates, none were heard. The August minutes were approved. He asked that if anyone had a change after today's meeting to send them to him directly via email.

## 4. Officer Reports

### a. Chair (Iris)

#### i. Update of Virtual Meeting Software (Zoom Upgrade)

Iris has spoken to Danielle and decided to go ahead and purchase the "enhanced" version for \$149/year. Asked for comments, all approved. She will work with Danielle and Marguerite to start a subscription immediately.

#### ii. Emerging Leaders

Iris shared a program idea to have an Emerging Leaders team work on the MAGIRT website to improve communications across all platforms. Colleen shared her thoughts and approved of the general idea but suggested that more detail be put into this before going forward. Iris will continue discussions with Colleen.

#### iii. Jury program

Tim Kiser volunteered to serve on the ALA Jury Program for a two-year term as a representative from MAGIRT. Iris thanked Tim for this important service.

iv. Chair program—brief introduction on program information, Chicago, IL 2020

Talked to John Hessler (Library of Congress) about delivering a program on 3D mapping (three dimensional mapping), possibly partnering with staff at the National Park Service.

v. Mid-Winter January 2020 Meeting Schedules

Iris has turned in our meeting schedule needs for upcoming Mid-Winter Meeting and thanked all unit leaders for sending that in to her on time. She will share room assignments/meeting specifics as soon as she has that information.

b. Vice Chair (Sierra) — Planning discussion for Mid-Winter, Annual –40th Anniversary (ALA Annual fieldtrip/social gathering)

Sierra has started a list of places to contact to possibly visit during the 2020 Mid-Winter Meeting in Philadelphia and welcomes more suggestions from everyone.

Sierra has contacted Kathy Hart to get background about how she handled the last MAGIRT anniversary celebration and will get ideas/suggestions from her going forward.

c. Treasurer (Marguerite/Pete)

Our financial picture remains very positive. With a slight increase in our overall net worth, both for the month of July and year-to-date, we are up again over last year. A year-end report will be prepared and submitted once the August figures are in from ALA. She will be soliciting budget requests from committee chairs in the next weeks ahead with a deadline of November 1, 2019 in anticipation of the preparation of our annual budget vote at Mid-Winter.

d. Webmaster—Colleen (updates and assistant position)

She has not gotten any volunteers to help as assistant webmaster. Craig volunteered, Colleen noted that he will have to contact Danielle to get him trained.

e. Past Chair (Tammy) - Status on MAGIRT Connect platform

Status on MAGIRT Connect Platform

The problems encountered back in June and again in August (trouble posting a message to the MAGIRT membership, seeing the latest discussion after logged in, and uploading files in the “MAGIRT Public Shared File”) have been resolved by ALA Connect. The only problem now being experienced is not receiving any ALA Connect MAGIRT Digest messages in my email inbox for recent posts to MAGIRT. Tammy recommended that everyone test your Connect website after you logged in. Check under the tab Communities—My MAGIRT Committees and tab Communities—My MAGIRT Communities, are the groups that you belong to accurate and updated? Please let her know if they are not. Tammy is willing to train folks in the use of ALA Connect platform, just reach out to her.

## Bylaws & Governing Documents/Nominations & Awards Committee

She sent out a call for nominations today for the 2020 MAGIRT Elections for the positions of Chair Elect (3-year commitment) and Assistant Treasurer (2-year commitment) in the MAGIRT listserv and ALA Connect. Please send Tammy nominations before Friday, November 29, 2019.

In response to an inquiry by Marguerite in July, the final version of the MAGIRT Bylaws from Paige, Beth, and Louise has been located. Thanks for their hard work of going through a formal process of establishing the position of Assistant Treasurer. A vote was held and the new position was approved and then put into place in April 2016. Tammy will upload the document in ALA Connect and ALAIR.

### **5. New Business:**

MAGIRT and WAML to host webinars (Education committee)—Collaboration

Background: On Friday, September 6, 2019, Iris received an email from Julie Sweetkind-Singer, member of WAML's Education Committee from Stanford University, (Susan Powell, President of WAML, copied on email) to see if WAML and MAGIRT would be interested in collaborating and hosting Webinars, see ideas below:

1. 2020 Census Update by Deirdre Bishop (Census Bureau)
2. 2022 National Spatial Reference System Modernization by Dr. Dru Smith (National Geodetic Survey)

If interested, Julie is to share more information and she is happy to reach out to help coordinate these speakers.

Iris opened the floor for discussion. Everyone present felt that both topics are excellent and worth pursuing to do as webinars. We do not have a chair for the Education Committee, where webinars are part of the committee's responsibilities, so we need to find one or more MAGIRT members to help organize and collaborate these.

Iris suggested reaching out to Maggie Long in her role as chair of Membership to get ideas. Marguerite suggested contacting the most recent chair of Education Committee, Anne Zald (Northwestern University) for assistance. Paige suggested another previous committee chair, Wade Bishop. Several questions were raised regarding fees, who is responsible for running the webinars, etc. Paige will send Iris past information about how to do webinars, Iris will also reach out to Maggie to gauge her interest and see if she can get volunteers to help move this forward.

### **6. Committee/DG/IG Reports**

- a. Bylaws & Governing Documents/Nominations & Awards Committee (Tammy)

Nominations for Chair-elect and Assistant Treasurer are now being accepted. An email was sent out to MAGIRT members this morning. Anxious to receive nominations from everyone, deadline for these is the end of November, election will be held Spring 2020.

Status of MAGIRT Bylaws as related to question about the Assistant Treasurer position: Tammy researched this, and also received a set of draft Bylaws changes from Paige early in September showing that the position had been added after it was voted to be approved in April 2016. Tammy will finish inserting minor changes to the Bylaws and have these ready for a vote at the next Executive Board meeting.

b. Cataloging & Classification Committee (Tim)

No report.

c. Cataloging of Cartographic Resources Interest Group (Maggie)

Maggie has spoken with Tim Kiser about what information she needs in preparation for taking over the position of Chair at the upcoming ALA Mid-Winter Conference. He provided her with the necessary documents and procedures to get her started.

d. Education Committee (vacant)

e. GeoTech Committee (Wangyal)

No report.

f. Membership & Marketing Committee (Maggie)

No update.

g. Online Presence & Oversight Committee (Megan)

No report.

h. Publications Committee (Abbey)

No report.

i. Map Collection Management DG (Craig)

This morning he sent out an invitation for topics for discussion at the upcoming Mid-Winter meeting. Craig will start a conversation on possibly changing the name of the group, and propose some suggestions, at the next DG meeting, to be held at the upcoming Mid-Winter meeting. Joy suggested Geospatial Resource Collections Discussion Group as one possibility.

j. MAGIRT/GODORT (GIS) DG Coordinator (Joy Suh)

No report.

## 7. Announcements

No announcements.

Meeting adjourned at 2:30 p.m.

Next Executive Board Meeting: October 28, 2019, 2 p.m. Eastern Standard Time.

Meeting recorded by:

Paige Andrew  
Secretary, MAGIRT



## From The Chair (continued from p.3)

Also, let us know, if you have any webinar ideas. MAGIRT continues to provide the cartographic community successful programs such as the upcoming 2020 ALA Annual program in Chicago on 3D mapping hopefully with the National Park Service.

Updated Bylaws & Governing Documents are posted to ALA Connect, ALAIR, and MAGIRT's Website. MAGIRT's nominations for officer positions are open. Submit your nominations for the following 2020-2021 positions: MAGIRT Chair-Elect (3-year commitment) and Assistant Treasurer (2-year commitment). Feel free to nominate yourself, a colleague, or a friend. For all nominations, please confirm that the person is willing to serve. Feel free to contact our Past Chair Tammy Wong for more information. The deadline for submitting nominations is Friday, November 29, 2019. Elections are held in Spring 2020. A call for Honors Award candidates is forthcoming!

Follow MAGIRT and discussions on ALA Connect Platform and [MAGIRT Website](#).

There are many opportunities for you to get involved in MAGIRT, please join us at our next virtual [Zoom Executive Board meeting](#) on Monday, October 28, 2019, 2-3 pm (EST). (Meeting ID: 858-306-753). Our meetings are always open to all MAGIRT members.

Get involved! If you have any questions and comments about MAGIRT, please feel free to contact me at [itaylor@loc.gov](mailto:itaylor@loc.gov).



---

### Seeking Volunteers – MAGIRT Needs YOU!

The MAGIRT Nominations Committee seeks nominations for the offices of Chair Elect and Assistant Treasurer. We encourage members interested in service on the MAGIRT Executive Board to put themselves forward as potential candidates for office, as well as recommendations by others.

#### **Chair Elect**

(3-year commitment beginning with Chair Elect, then serving as Chair and finally Past Chair)

#### **Assistant Treasurer**

(2-year commitment beginning with Assistant Treasurer, then Treasurer)

Here's the [list](#) of our current MAGIRT officers, committee chairs, coordinators and liaisons.

Please send your recommendations by Friday, November 29, 2019.

We look forward to your nominations!

Tammy Wong  
MAGIRT Past Chair and Chair of the Nominations Committee



## NEW MAPS AND CARTOGRAPHIC MATERIALS

"YOUR NAME HERE"

*From the Editor's* Keyboard

### WANTED!

We have an opening for someone who would like to write the New Maps and Cartographics Materials column. It is sad to report that our current column writer can no longer contribute due to the increased work load at her institution.

SO!!! I would like to encourage any MAGIRT member who is interested and wishes to volunteer to continue this important column in *base line*. If you enjoy finding and exploring new atlases, maps and websites and also enjoy writing, why not combine the two together and write and tell us about them. This is a wonderful opportunity for someone to make a concrete and impactful contribution to our part of the library profession. It also looks great in that tenure or promotion portfolio. Please contact the editor if you want more information or are interested in writing this column.

**M**AGIRT Connect page. For all the resources you need to know about what is happening inside MAGIRT.

<https://connect.ala.org/magirt/home>

GREAT MOMENTS IN MAP LIBRARIANSHIP by Jim Coombs

OKAY, KIDS, THOSE ARE ALL THE RESOURCES WE HAVE IN THE MAP LIBRARY. THANKS FOR COMING TO MAPS & GIS FOR YOUR FIELD TRIP! DO YOU HAVE ANY QUESTIONS?

YES, HOW MANY COUNTRIES ARE THERE IN THE WORLD?

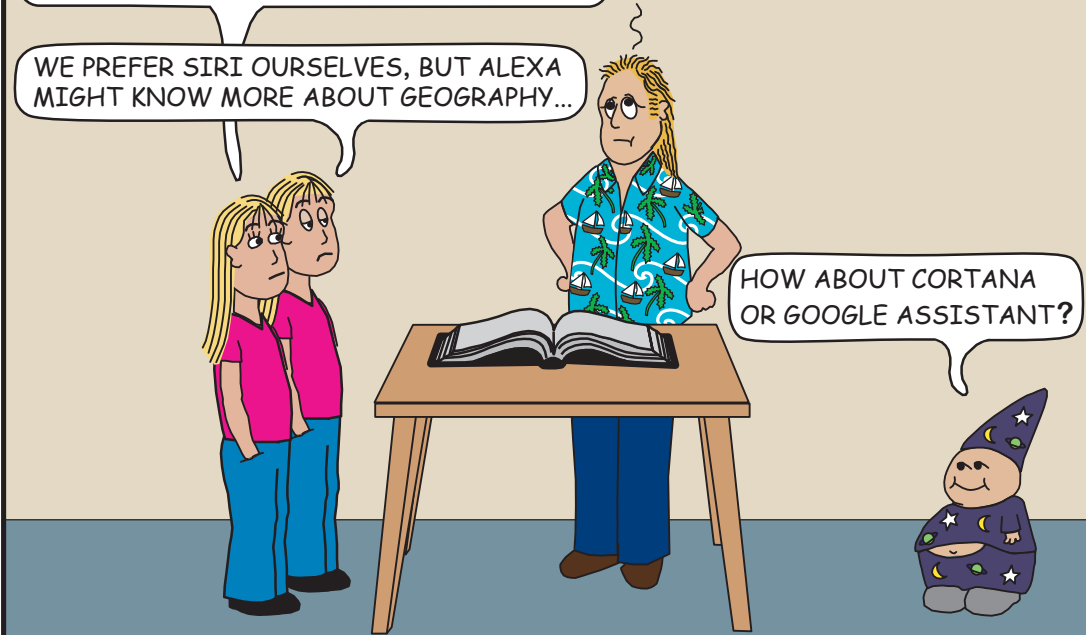
LET'S FIND THE ANSWER IN A WORLD ATLAS.



WHY DON'T YOU JUST ASK SIRI OR ALEXA?

WE PREFER SIRI OURSELVES, BUT ALEXA MIGHT KNOW MORE ABOUT GEOGRAPHY...

HOW ABOUT CORTANA OR GOOGLE ASSISTANT?



© JIM COOMBS 10/19