

ISSN 1943-6548



# base line

*a newsletter of the*  
**Map and Geospatial Information Round Table**

## **TABLE OF CONTENTS**

- 3 From the Chair**
- 4 MAGIRT Election Results**
- 5 Plans for Virtual ALA**
- 8 On the Cataloging/Cataloguing Front**
- 10 MAGIRT Exec Board Minutes – March 9, 2020**
- 14 New Maps and Cartographic Materials**
- 21 From the Editor’s Keyboard**
- 21 Jim Coomes Retirement Announced**
- 22 Great Moments in Map Librarianship**

<http://www.ala.org/rt/magirt>

**Volume 41, Number 2**  
**April 2020**



**base line** is an official publication of the American Library Association's Map and Geospatial Information Round Table (MAGIRT). The purpose of base line is to provide current information on cartographic materials, other publications of interest to map and geography librarians, meetings, related governmental activities, and map librarianship. It is a medium of communication for members of MAGIRT and information of interest is welcome. The opinions expressed by contributors are their own and do not necessarily represent those of the American Library Association and MAGIRT. Contributions should be sent to the appropriate editor listed below.

**Editor:** John A. Olson  
Government and Geo-Information Librarian  
Syracuse University  
Tel: 315-443-4818 E-mail: [jaolson@syr.edu](mailto:jaolson@syr.edu)

**Distribution Manager:** Mike Smith  
Subject Specialist for Maps, California Gov Info, GIS  
Coordinator, UCSD  
Tel: 858/534-1248 E-mail: [mls003@ucsd.edu](mailto:mls003@ucsd.edu)

**Cataloging Editor:** Tammy T. Wong  
Cartographic Materials Cataloger  
Geography and Map Division, Library of Congress  
Tel: 202/707-6735 E-mail: [twon@loc.gov](mailto:twon@loc.gov)

**Digital Mapping Editor:** VACANT

**New Maps and Books Editor:** Kim Plassche  
Sciences Librarian, Liaison to Geography & GIS  
University at Buffalo  
Tel: 716/645-8168 E-mail: [kf43@buffalo.edu](mailto:kf43@buffalo.edu)

**Membership and Marketing Committee Chairperson:**  
Maggie Long  
Special Collections Cataloger  
Wesleyan University  
E-mail: [longmml88@gmail.com](mailto:longmml88@gmail.com)

**Advertising Rates: For one issue: full page \$100; half page \$50; quarter page \$25. Opposite "Great Moments in Map Librarianship": full page \$150; half page \$80; quarter page \$40.**

Send graphics as an: .AI, .PDF, .JPG, or .GIF file and 300 dpi or better. Send text documents in: Cambria 12 point. Send files as an email attachment to the editor. Submissions may be edited and re-formatted to the extent necessary to fit the size and space allotted for each issue. Final full-page size is 8 x 10 inches. Advertisers will be invoiced. Please make payments to the MAGIRT Treasurer, payable in U.S. dollars to ALA-MAGIRT.

**base line** is published electronically six times a year: in February, April, June, August, October, and December. All older issues of base line are now freely available on the MAGIRT website.

Members of MAGIRT can access **base line** as a benefit of their membership.

American Library Association personal and institutional members may choose MAGIRT membership for \$20.00 (personal) or \$60.00 (institutional) by so advising the American Library Association, 50 W. Huron St., Chicago, IL 60611.

MAGIRT OFFICERS:

**Chairperson:**  
Iris Taylor  
Senior Cataloging Specialist  
Geography and Map Division, Library of Congress  
Tel: 202/707-8529 E-mail: [itaylor@loc.gov](mailto:itaylor@loc.gov)

**Vice-Chairperson (Chair-Elect):**  
Sierra Laddusaw  
Maps Curator, Digital Scholarship Curator  
Map & GIS Library – Cushing Memorial Library & Archives  
TAMU 5000  
E-mail: [sladdusaw@library.tamu.edu](mailto:sladdusaw@library.tamu.edu)

**Secretary:**  
Paige Andrew  
Cartographic Resources Cataloging Librarian  
Pennsylvania State University  
E-mail: [pga2@psu.edu](mailto:pga2@psu.edu)

**Treasurer:**  
Marguerite Ragnow, Ph.D.  
Curator, James Ford Bell Library  
University of Minnesota  
Tel: 612-624-6895 E-mail: [ragn0001@umn.edu](mailto:ragn0001@umn.edu)

**Assistant Treasurer:**  
Pete Reehling  
Digital Scholarship Librarian  
Digital Scholarship Services – USF Libraries  
E-mail: [reehling@hotmail.com](mailto:reehling@hotmail.com)

**Past Chairperson:**  
Tammy T. Wong  
Cartographic Materials Cataloger  
Geography and Map Division, Library of Congress  
Tel: 202/707-6735 E-mail: [twon@loc.gov](mailto:twon@loc.gov)

<http://www.ala.org/rt/magirt>

© American Library Association 2019

312.944.6780

Published by the Map and Geospatial Information Round Table



## FROM THE CHAIR

IRIS TAYLOR

LIBRARY OF CONGRESS

Global Coronavirus pandemic (COVID-19)!

Although the cherry blossom trees are a big tourist attraction for the DC metropolitan area, during this year's season the world is struggling with the Coronavirus (COVID-19) pandemic, which is on everyone's mind. Changes are occurring frequently and are being monitored daily. Many of you are forced to work from home and following stay at home guidelines along with practicing social distancing. I sincerely hope that you are well and staying safe!

### Updates:

- Congratulations to our newly elected MAGIRT officers: Vice-Chair/Chair-Elect: Min Zhang and Assistant Treasurer/Treasurer-Elect: Kevin Dyke.
- MAGIRT has moved away from the LibGuide platform for maintaining information about us and our activities and transitioned to using ALA Connect. Thanks to the Online Presence Oversight Committee for archiving LibGuide content in preparation for and beginning to use the ALA Connect platform.
- Here are the results from the [MAGIRT Membership Survey](#) on the future of ALA Mid-winter meetings and whether to have online/virtual meetings that was conducted by Vice-Chair Sierra Laddusaw in March.
- By now all of you are aware of the cancellation of the American Library Association's Annual Conference & Exhibition that was scheduled for June 25-30, 2020, in Chicago.



### Planning:

At the time of this printing, there is no decision on holding MAGIRT's annual Chair's Program, committee and executive board meetings, and events for the virtual conference that is to "replace" the annual conference. Sierra, our Vice Chair is organizing a virtual social event outside of ALA's virtual conference. In addition, we are working with the Education Committee to offer free registration to our webinars as one way to keep the MAGIRT name visible and our members engaged. We will be in touch in the coming days and weeks to provide more information and updates.

Many of our committee chairs and discussion/interest group leaders will be vacating their seats beginning July 1st and we need your help in filling those vacancies. Please consider serving in one of these leadership roles. Contact any member of the Executive Board and/or me, if you would like to pursue. Also, if you have any questions, comments, or concerns about anything, please feel free to contact me.

Thank you for your continued support as we work through this unprecedented situation!

Be well and stay safe!



## MAGIRT 2020 Election Results

Congratulations are in order for our newly elected MAGIRT officers. We all appreciate their willingness to serve and we look forward to working with them as they start their terms of office.

- **Vice-Chair/Chair-Elect: Min Zhang**
- **Assistant Treasurer/Treasurer-Elect: Kevin Dyke**

## ALA Annual Cancelled for 2020

On March 24<sup>th</sup>, for the first time since World War II, ALA has cancelled the annual conference of the American Library Association that was to be held this June in Chicago. The measure was taken to prevent the continued spread of the COVID-19 pandemic. See the links for more information.

<https://americanlibrariesmagazine.org/blogs/the-scoop/ala-cancels-2020-annual-conference/>

<http://www.ala.org/news/press-releases/2020/03/american-library-association-cancels-2020-annual-conference-due-covid-19>

Efforts are now being made to offer an alternative Annual Conference in a virtual form. More will be coming soon so stay alert to the ALA and MAGIRT lists and on ALA Connect for the latest news on the virtual conference.

# Plans for Virtual ALA Conference Taking Shape

ALA will hold a virtual event (VE) June 24-26, called “Community Through Connection”. The event is an opportunity to provide members and stakeholders a way to come together in an unprecedented time. It will keep the June “ALA conference time” on the library calendar, allow us to try new things, and to showcase ALA’s wealth of resources and content. At the same time, the VE cannot replace the Annual Conference. We wanted to answer some questions so you can plan.

## VE Programs

In consultation with the ALA Executive Board and ALA Conference Committee, a subset of programs approved by our committees for the ALA AC in 2020 will form the centerpiece of our VE. We will be reaching out to the staff liaisons for input on programs your unit has submitted as we determine which programs will be included. Presenters will be provided with resources on virtual presenting and guidelines about updating their presentations for our post-pandemic world. Some new programs will also be developed. An overall planning timeline is being prepared and will be shared.

## Platform and Event Planning

The Cadmium platform that most of you are familiar with has capacity for virtual events and given that all our content is stored there, will be the virtual event platform. There will be a registration fee for the VE and we are working on determining rates. Individuals who registered for annual had the option to rollover their registration to the VE in a Virtual Event/Midwinter Bundle.

## Business Meetings

The virtual event will focus on education and engagement. Except for a very few number of ALA meetings, there will be no business meetings held as part of the VE. The ALA Council Meeting(s), ALA Membership Meeting, Information Session, and ALA Board meetings will be held within the general timeframe, immediately prior to or immediately following the VE dates. Registrants to the VE will be informed (along with the rest of the ALA membership) that ALA has an open meeting policy for members and will be invited to those meetings.

For the business and committee meetings of your units, we encourage each of you to host these meetings virtually and to schedule them independent of the VE. Please reach out to your members and constituencies and share your plans. (Note: some divisions have policy related to membership meetings; we will address those separately, but they will not be part of the VE.)

## Special Events and Exhibits

There will be special events at the VE. To date those are: Opening Session, President’s Program, Closing Session, as well as an exhibit-focused event like Book Buzz. The opening and closing events will be an opportunity to recognize association leaders and “pass the baton” to next year’s leaders, in addition to showcasing a nationally known speaker.

We know everyone plans orientations, preconference, President/Chair Programs (Division, Roundtable, and Affiliate), Placement Center, and more. We encourage you to plan these separately. Please let us know if you have any questions related to a special event you had planned.

## **Awards**

ALA and its units manage an extensive award program. The ALA Executive Board is working with Conference Services to determine how to handle ALA Awards at the VE and at the January event. If your division, RT, or office can create an alternative to your traditional annual conference awards program (a virtual awards program and/or other way to spotlight your award winners and sponsors), we encourage you to do so. If you are concerned that your award program must be held at the VE or in January, please let us know.

## **Communications and Marketing**

Conference Services will market the VE, along with support from ALA CMO. As we determine which programs will be included, we may call on you to market your event.

## **Assessment and Evaluation**

Conference Services and PLA will develop an evaluation that measures impact, quality, and net promoter score. We hope the evaluation template will be incorporated into all CE events that we host so that we can aggregate data ALA-wide and assess program success.

## **Planning Group for VE**

We will need help with a range of things and will be creating VE subgroups to focus on: programs; special events; communications, etc. If you have volunteered, thank you! We will reach out to you ASAP.

Please understand that several components are still under development and we thank everyone for your patience. We look forward to trying this out and expect that virtual conference events will become more and more part of our work moving forward.

Earla Jones, Director of Conference Services Operations

Barb Macikas, PLA Executive Director



# GLOBAL CENSUS DATA FROM EAST VIEW

Your one-stop destination for current and historic GIS census data from around the world, along with corresponding published results, questionnaires and other census ephemera

**EAST VIEW'S GLOBAL CENSUS COLLECTION** is a robust resource for authoritative census data from around the world. The global census collection simplifies access to census material, formatting each census into an easy-to-use geodatabase and providing comprehensive metadata and user guides. In addition, all published volumes will be scanned and discoverable, along with supporting questionnaires and other ephemera.

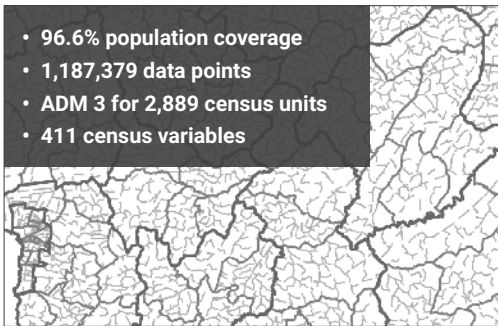
East View already has over 25 countries available, including Japan, South Africa, Burundi, much of Latin America and several former Soviet states, with new content and countries being added on a regular basis.

## FEATURED DATA

GIS EDITION

### BURUNDI 2008 CENSUS

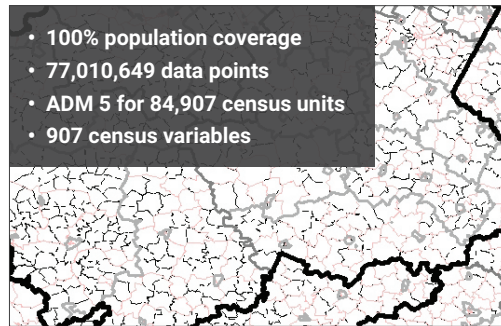
- 96.6% population coverage
- 1,187,379 data points
- ADM 3 for 2,889 census units
- 411 census variables



GIS EDITION

### SOUTH AFRICA 2011 CENSUS

- 100% population coverage
- 77,010,649 data points
- ADM 5 for 84,907 census units
- 907 census variables



## DELIVERABLES

GIS census products include: geodatabase with administrative boundary vector data, shapefiles, census guide, original census documentation, and full attribute level metadata.

Along with GIS census data, East View also offers official census publications and related source materials. While the availability and type of materials will vary by country, examples of typical materials include: official published results, census methodology, questionnaires, maps, and more.

WANT MORE INFORMATION?

Visit [www.eastview.com/gca](http://www.eastview.com/gca) for more details on these and other available census products. Or contact us at [info@eastview.com](mailto:info@eastview.com).



EASTVIEW.COM | GEOSPATIAL.COM | INFO@EASTVIEW.COM

# ON THE CATALOGING/CATALOGUING FRONT

TAMMY WONG

LIBRARY OF CONGRESS

## **Change in guideline for considering whether resources of state university and state college presses are government publications**

This has to do with the treatment of state university and state college presses when indicating whether a government publication or not (MARC21 fixed (008) field). As the result of a query to Policy, Training, and Cooperative Programs, the decision was made to exclude resources from state university and state college presses from being treated as government publications. Descriptive Cataloging Manual (DCM) B5.10.3.9 is being updated to reflect this change. DCM will be updated and made available through normal channels.

DCM B5.10.3.9 (Academic Institutions and University Presses) now reads:

“Treat resources published by academic institutions as government publications if the institutions are created or controlled by government. However, do not apply this criterion to state university or state college press publications in the United States or to resources published by British universities.”

## **LCSH Multiples Cancellation Project**

The better to support linked-data initiatives, “multiple” subdivisions are being cancelled from LCSH. “Multiple” subdivisions are a special type of subdivision that automatically gives free-floating status to analogous subdivisions used under the same heading. The initial focus of the project is the multiple subdivisions that are used after the topical subdivision –Religious aspects. Since June 2019, 294 authority records have been cancelled and 2,471 have been created. In addition, 75 validation records have been redesignated as full authority records. The continued existence of a multiple subdivision for a particular topic cannot be assumed. It is therefore imperative to search LCSH at all times, in order to determine whether the multiple has been cancelled. Catalogers may remember the multiples Birth control—Religious aspects—Buddhism, [Christianity, etc.] and Birth control—Religious aspects—Baptists, [Catholic Church, etc.], for example, but they were cancelled in May 2019 and replaced by 20 individual authority records. Because the multiples were cancelled, all headings of the type Birth control—Religious aspects—[religion or Christian denomination] must have an authority record; that is, they must be proposed as needed. Individual multiple subdivisions should continue to be used according to the instructions in Subject Headings Manual H 1090 until they are cancelled. The community may keep abreast of progress on this project by consulting the [Multiples Cancellation Project](#) website. The project will not proceed alphabetically, so those wishing to update their local catalogs are encouraged to download the spreadsheet periodically and sort it by the date of cancellation. Additional information about the project can be found on the project website.





Global Aerial/Satellite Imagery & Value-Added Remote Sensing Solutions  
Extensive Foreign Mapping Datasets – Off-the-Shelf & Custom



**SATELLITE & AERIAL IMAGERY/PROCESSING**  
**DIGITAL ELEVATION MODELS • VECTOR FEATURE EXTRACTION**  
**SPECTRAL CLASSIFICATION & OBJECT-BASED IMAGE ANALYSIS**



*Dharavi, India vector feature extraction: building footprints and centroids.*

## **GLOBAL TOPOGRAPHIC MAPS & NAUTICAL CHARTS**

Discounted countrywide DRG, vector, DEM and paper map sets

## **MAP LIBRARY SERVICES**

Large-format scanning, geo-referencing, metadata & index creation

*Contact us for New Datasets & Academic Discounts*

AIRBUS DEFENCE & SPACE Image Partner • DigitalGlobe Distribution Partner • Authorized Valtus Reseller • Authorized Intermap Distributor  
USGIF Member • USGS Business Partner • Esri® Business Partner • Planet Labs/RapidEye Direct Distributor

**tel +1.303.790.9730 • fax +1.303.790.9734**

**sales@landinfo.com • www.landinfo.com**

# **MAGIRT Executive Board Minutes**

**Date: March 9, 2020**

**Location: Virtual (Zoom)**

1. **Call to order:** Meeting called to order at 2 p.m.
  2. **Call for changes to Agenda (Iris):** No changes to the agenda were requested.
  3. **Secretary--**Minutes from Sunday January 26, 2020 (Paige): No changes.
  4. **Officer Reports**
    - a. Chair (Iris)
      - i. Update for 2020 ALA Annual Conference, Space request form, time adjustments.  
Iris has turned in space requests and waiting for ALA to finalize.
      - ii. Update for 2020 ALA Annual MAGIRT Program—  
The MAGIRT Program is scheduled for Sunday at 4:00-5:30 p.m.
    - b. Vice Chair (Sierra)

Plans for 2020 ALA Annual fieldtrip/social gathering

The 40th Anniversary Party will be held at the fine press studio, Spudnik Press. We were able to book the space for an after-hours party on Friday, June 26 from 6:30 – 8:30pm. Rental cost is \$350, this includes the space, which will have an exhibit up at the time, and all attendees getting to make a print of the MAGIRT logo on studio equipment. Studio staff will be on hand for the event. Spudnik Press' space is on the 3rd floor of a historic building, it is accessible. We will need to book a caterer. The Press will provide Sierra with names of caterers they have worked with in the past and liked.
    - c. Secretary  
No report.
    - d. Webmaster (Colleen; Assistant webmaster Craig)  
No report.
    - e. Treasurer (Marguerite/Pete)—Review of proposed budget  
Marguerite went over proposed changes for FY 2021 budget and answered some questions. After discussion on several points the budget was unanimously approved by voice vote. Marguerite will forward the budget to Danielle.
    - f. Past Chair (Tammy)

*Honors Award Dinner*

The Nominations & Awards Committee received multiple award nominations. The Chair Trio will discuss the nominations and select an Award winner soon.
-

### *Status of 2020 ballot: Chair-Elect, Assistant Treasurer/Treasurer-Elect*

Over the three-day period of March 9–11, voters will be notified by email and will be provided with a unique URL and information about how to vote. Please be sure to check your email spam folder for the message if not found in your Inbox folder. Note that the invitation to vote message has the subject line “Cast Your Vote for the ALA 2020 Election” and is from the email address (noreply@directvote.net).

There are two ballots. The first one is for the ALA President and the ALA Council. I encourage you to take a look at the biographical information of the two ALA Presidential candidates and cast your vote.

The second ballot is for our own MAGIRT officer positions. This year we have two openings, Vice Chair (Chair-Elect) and Assistant Treasurer.

The ALA election is open through April 1, 2020, 11:59 PM Central Time.

### *ALA Connect –Demonstration*

ALA launched a redesigned ALA Connect in February 2020. David Sheffieck (ALA Community Engagement Manager) has shared some [tips/“how tos”](#) about the redesigned platform.

There are short videos that provide overview of the high-level changes. Tammy brought up the ALA Connect site and walked everyone through latest features. For instance, if not a member of MAGIRT (or any other unit) one can now click on “Join MAGIRT” and it will take you to ALA “join” site to do so. Other good new features are an “event” link to register for a future event, plus lots of other member features to use. There is also a “Connect 101” YouTube video on how to use the website. Tammy can answer questions that any member may have and is willing to be your tutor.

## **6. Old Business (updates)**

### a. Future of Midwinter Conferences - Virtual Midwinter Meetings

Iris noted that Sierra had mailed out surveys regarding the future of Mid-Winter and virtual meetings.

### b. Round Table Merger

Iris is asking us to slow down on the idea of possibly merging with GODORT because some of the latest information from them has changed in details and there are a number of items with open questions (e.g., what happens with our budget). Sierra sent out a survey to MAGIRT members regarding possibly merging with GODORT with a deadline of March 20, 2020 for responses. Sierra and Iris are working behind the scenes to stay on top of communications with GODORT to our benefit.

## **7. Committee/Discussion Group/Interest Group Reports—Liaisons reports**

### a. Bylaws & Governing Documents/Nominations & Awards Committee (Tammy)

See information above under Past Chair’s Report.

b. Cataloging & Classification Committee (Tim)

- The membership has been tentatively established for the MAGIRT/WAML Joint Task Group on Core Elements for Description of Geospatial Datasets headed by Louise Ratliff, and a formal announcement will come soon.
- Artis Wright and Angeline Beljour, both of NYPL, have joined the CCC 3R Task Group headed by Paige Andrew, joining continuing members Susan Moore and Tammy Wong.

c. Education Committee Discussion Group (Kevin/Eric): No report

d. GeoTech Committee Discussion Group (Wangyal): No report

e. Membership and Marketing Committee (Maggie): No report

f. Online Presence & Oversight Committee (Megan)

After feedback from the last meeting, the HTML archive of the three LibGuide sites has been added to ALAIR.

g. Publications Committee (Abbey): No report

h. Cataloging of Cartographic Resources Interest Group (Maggie): No report

i. Map Collection Management Discussion Group (Craig): No report

j. MAGIRT/GODORT (GIS) Discussion Group Coordinator (Joy--Wangyal): No report

**8. Announcements**

There were no announcements.

**9. Adjournment**

Meeting adjourned at 3 p.m.



---

**M**AGIRT Connect page. For all the resources you need to know about what is happening inside MAGIRT.

<https://connect.ala.org/magirt/home>

# MAGIRT Membership Survey Results

Report of MAGIRT Membership Survey conducted in March 2020.

3/27/2020 - Sierra Laddusaw

Survey participants were asked how they would prefer future ALA MidWinter meetings to be conducted.

Online	24
Mostly Online/some in person	10
Some online/mostly in person	4
In person only	1

Survey participants were also given the opportunity to provide feedback on how to improve future MidWinter meetings, a general analysis of the responses follow:

- Hold virtually
  - Multiple comments on the cost of attendance preventing participation
  - Recommendation to hold virtual meeting the week before or after main ALA MidWinter so that who need to attend in MidWinter in person can participate in both
  - Seek input from MAGIRT members on timing, method, and agenda of potential virtual meetings
- Increased communication in advance of meeting
- Increased focus on geospatial and digital maps
- Hold training sessions on map-related issues
  - Open these broadly for those that only have map responsibilities as a small part of their position
- Regional, in-person meetings
- Have a program session

Survey participants were asked how they prefer to receive communication about MAGIRT. One member suggested holding periodic MAGIRT Zoom meetings with the larger membership.

Listserv	31
ALA Connect	6
Both	2

Survey participants were asked if they would you support a merger with GODORT.

YES	34
NO	5

## NEW MAPS AND BOOKS

Kim Plassche

UNIVERSITY OF BUFFALO

*“Rivers know this: there is no hurry. We shall get there some day.” – A.A. Milne*

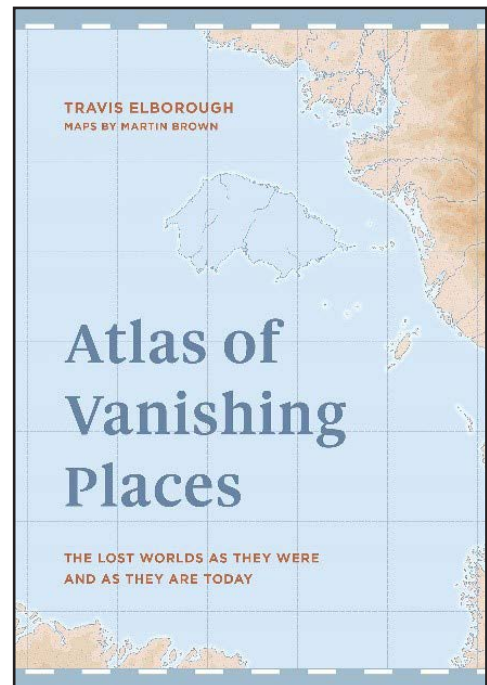
The world has changed quite a bit since I wrote my first reviews for this month’s New Maps. I began looking at sources in early March. At that point I was concerned with including atlases and maps that celebrated the arrival of spring and helped us reflect on the fiftieth anniversary of Earth Day. I now suspect Earth Day 2020 will squeak by largely unnoticed as Americans struggle to cope with our new reality during the worldwide pandemic. By now many of us have read the news reports noting reduced air and water pollution globally as a result of humans staying inside. Perhaps this impact will spark ideas and inspire us more than any large Earth Day commemoration ever can.

### Books

Elborough, Travis and Martin Brown. *Atlas of Vanishing Places: The Lost Worlds as They Were and As They Are Today*. London: White Lion Publishing, 2019 (ISBN: 9781781318959). 207 p.: color illustrations, color maps.

We are aware of many effects of global climate change. We are already witnessing or expect to see a reduction of sea ice, shifts in species ranges, intensified extreme weather events and increased wildfires. In a similar vein, we see how war and terrorism can destroy communities. *Atlas of Vanishing Places: The Lost Worlds as They Were and As They Are Today* is an attempt to highlight locations we have lost to such forces, as well as those places on our map today that are in danger of disappearing in the future.

The vanishing places are separated into four major sections: Cities, Forgotten Lands, Shrinking Places and Threatened Worlds. The first two sections cover settlements that have been rediscovered or excavated, while others have been lost to history. The second half features waterways, ecosystems, parks and structures that are at risk of vanishing due to natural causes or human interference. In his introduction, Elborough details the vanishing act of the Aral Sea in Uzbekistan, which experienced drastic water level drops due to the diversion of two main rivers in the area. The author was inspired by the disappearance of the Aral Sea to create this volume. Noting that old maps allow us to time travel and view ancient sites that are long gone, and that we more frequently use maps when planning out future movements, he worked with cartographer Martin Brown to create the maps for this volume.



This atlas truly crosses time and the globe. Elborough takes us to 37 locations including Xanadu (China), Petra (Jordan), Chan (Peru), Bodie (California), Skipsea (United Kingdom) and The Great Barrier Reef (Australia).

Martin Brown draws maps pointing to where sites are found in relation to other ancient civilizations, as well as to modern-day locales. He also includes city plans based on archaeological digs. While the maps do an excellent job of orienting us in time and space, one map is particularly confusing due to color choice. On the map for Mahabalipuram (p. 39), the same orange color is used for the blocks representing “Principal temples and buildings” and structures “Revealed by the 2004 tsunami”, as well as for an outline of “Location of submerged temples”. Since each shape is rectangular, it is not immediately clear which landmark was a principal temple, revealed by the tsunami or submerged. The remaining maps in the atlas make use of varying colors and shapes, and are quite useful in understanding the overall theme of the location’s chapter.

Of particular interest for me is the chapter focused on the Lost Colony of Roanoke, as I am fascinated with the mystery of what happened to the settlers there. The map drawn for Roanoke covers the surrounding areas in present-day Virginia and North Carolina in detail. Names and locations of native peoples, extent of marshland, size of original colony on Roanoke Island in 1585, and a possible location for where the colonists disappeared to (present-day Hatteras Island) are included.

The Florida Everglades are featured in the section for Shrinking Places. I have a personal connection to Everglades, having fallen in love with the park during an immersive course during my undergraduate studies. In this chapter, the book takes a slightly political turn, noting Donald Trump’s promise to “Drain the Swamp” during his 2016 presidential campaign. He of course was not referring to the swamp in Florida, and although the author continues to explain the President has a home in Palm Beach, the slight diversion is out of context and distracts from the main subject matter of the chapter. The author is attempting to draw a parallel to the promises made by Napoleon Bonaparte Broward, the governor of Florida wanting to literally drain the water out of the Everglades. The chapter continues to describe how in addition to the political influence in the region, the Everglades faces threats from invasive species.

While the previous section focused on specific waterways and their surrounding regions, the Threatened Worlds chapters highlight much larger areas at risk of vanishing. Among those discussed: Timbuktu, Venice, Great Barrier Reef and the Great Wall of China. This section underlines the responsibility of humans as we lose these ecosystems and historical structures. Martin Brown’s maps highlight the vast extent of logging operations on the African continent, pollution in the Yamuna River (India), glacial melting in Montana and coral bleaching (Great Barrier Reef).

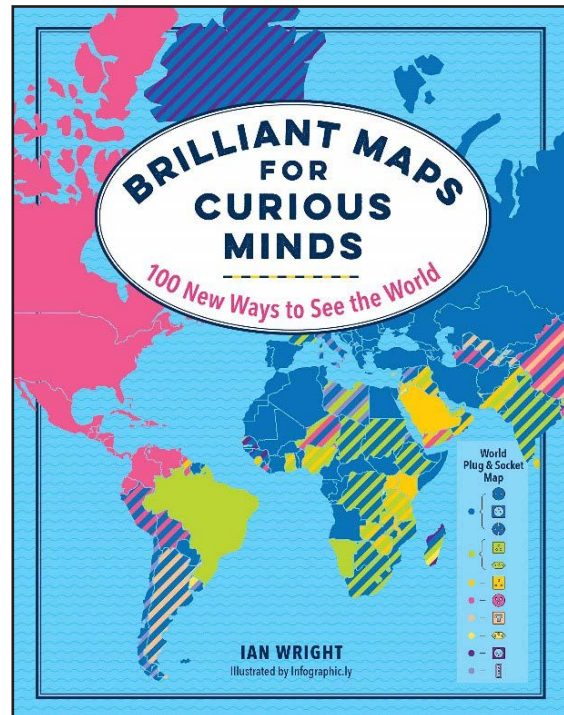
The author chooses a variety of locations for this volume. The photographs and illustrations chosen complement the detailed histories, and the original maps help readers understand where in the world places are vanishing.

Wright, Ian. *Brilliant Maps for Curious Minds: 100 New Ways to See the World*. New York: The Experiment, 2019 (ISBN: 9781615196258). 208 p.: color illustrations, color maps.

Where are the countries that have had a female leader in the last 50 years? Can you really dig a hole to China from the United States? Are there any countries that don't have McDonald's restaurants? The answers to these questions and many more are visualized in the pages of *Brilliant Maps for Curious Minds: 100 New Ways to See the World*. This title may sound familiar to visitors of the website <https://brilliantmaps.com/>. This website was launched by Ian Wright in 2014. Its subsequent popularity is evidenced not only by the number of website views, but also by the number of shares of his more than 350 maps on social media.

In this volume, Ian Wright collects 100 of his favorite maps, categorized by nine broad themes: 1 People and Populations -- 2 Politics, Power and religion -- 3 Culture and Customs -- 4 Friends and Enemies -- 5 Geography-- 6 History-- 7 National Identity-- 8 Crime and Punishment-- 9 Nature. Some of the maps are lighthearted (*Football vs. soccer*, p. 50), many are grim (*WWI casualties as a percentage of prewar populations*, p. 144) and a few are surprisingly useful for world travelers (*World plug and socket map*, p.80 and also the map featured on the book cover).

The data for the maps is sourced from research firms, NGOs and government agencies (such as Pew Research Center, Amnesty International and the Central Intelligence Agency). However, some maps visualize data or concepts found on Wikipedia. Tracking down the citations provided in Wikipedia prove the data is verifiable.

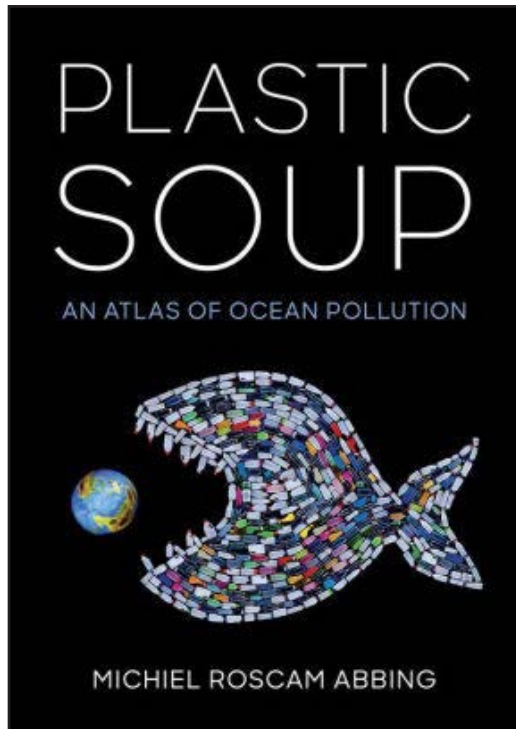


The maps, illustrated by Infographic.ly, are designed for readers with a basic knowledge of political geography. Many of the maps lack country labels, which serves to draw attention to the color variance between countries. However, the significance of the data may be lost if the reader doesn't know the name of the countries they are looking at. It is also assumed readers are able to identify national flags. The map showing largest source of imports by country (p. 34) fills the import country's shape with the exporter's flag. This is unique and visually appealing, but the map may not be useful for readers unable to recognize the flags. A final design issue lies in the size of the world maps. Many maps cover two pages, and it difficult to see the countries in the seam of the book. Some Middle Eastern and African countries are nearly impossible to see without possibly damaging the spine.

This book would be a great addition to any collection serving the general public, due to the variety of topics covered. It can also be a great tool for faculty and students in political science, history or sociology courses in particular. If a reader would like to share a map from the book in class or online, one simply needs to browse the Brilliant Maps blog to find a similar map.



Roscam Abbing, Michiel. ***Plastic Soup: An Atlas of Ocean Pollution***. Washington, DC: Island Press, 2019 (ISBN: 9781642830088). 124 p: color illustrations, color maps.



*Plastic Soup: An Atlas of Ocean Pollution* has only four maps. As author Michiel Roscam Abbing points out in his introduction (p. 1), books of maps were named after Atlas, the Greek god sentenced to carry the weight of the heavens on his shoulders for eternity. This book is a “thematic perspective on the worldwide plastic soup problem and possible solutions.”

What is plastic soup? Oceanographer Captain Charles Moore coined this term to describe the plastic pollution he encountered floating in the North Pacific Gyre in 1997. Roscam Abbing dispels the myth there are vast islands of plastic hovering in the ocean, but points out the five ocean gyres mapped (p. 19) aid in the movement of plastic pollution globally. The plastic litter ends up floating in the water, abandoned on beaches or in the stomachs of birds, fish and other animals.

I was drawn to this book by what some may refer to as a misleading title, and was a bit disappointed to find few maps within its pages. The maps and

photos provided alongside the story of plastic convey the global reach of plastic pollution’s dramatic effects on the environment. Images of beaches covered with litter, sea lions tangled in plastic netting and seabird’s stomachs brimming with plastic refuse (including an intact cigarette lighter) make it clear mass-production of consumer goods made with the “miracle” material plastic has terrifying consequences. The author justifies his title by acknowledging the Greek Titan Atlas’ burden. His book makes it clear - the burden of ocean plastic is heavy on our shoulders.

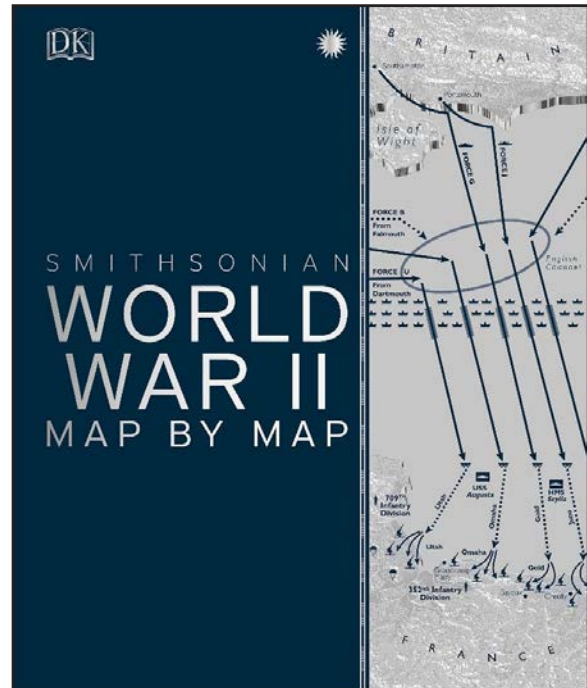
Island Press is a nonprofit organization dedicated to publishing books focused on solving global environmental problems. This book does not merely document the effect of plastic pollution, but examines practical solutions extending beyond the *reduce, reuse, recycle* mantra we are familiar with. Roscam Abbing asks readers to also consider six additional “R” actions: reject, redesign, repair, replace, recover and restore (p. 116). Offering a choice of actions for consumers and producers reiterates the fact that this problem can be solved by sharing the responsibility of plastic waste reduction.

Merritt, Ed, Simon Adams, Tony Allan, Kay Celtel, R.G. Grant, Jeremy Hardwood, Philip Parker and Christopher Westhorp. ***World War II: Map by Map***. New York: DK Publishing, 2019 (ISBN: 9781465481795). 288 p.: color illustrations, color maps.

To fully comprehend the scale of a world war, a globe may be more appropriate than an atlas, due to the vast expanse of geography touched by the conflict. World War II in particular affected dozens of countries and all continents. *World War II: Map by Map* employs contemporary maps, photographs, timelines and detailed original thematic maps in a grand effort to illustrate the global impact of the war.

Unfortunately, I must admit I didn't learn much about World War II in my required high school and college history coursework. The teachers devoted too much attention to ancient and colonial US history, and inevitably the students would be rushing through the 20<sup>th</sup> century history as we prepared for final exams. I've spent much of my personal time devouring information about the wars, mainly in an attempt to keep up a conversation with my husband. With degrees in history and time spent abroad, he doesn't lack the knowledge of this tumultuous time in world history I do.

*World War II: Map by Map* is an excellent book for those, like me, needing a good overview of the major figures, battles and events of the war. The chapters are arranged chronologically: The Slide to War 1918-1939 -- Germany Triumphant 1939-1941 -- The Widening War 1942 -- Turning the Tide 1943-1944 -- Endgame and Aftermath 1944-1955. Within each chapter, there are several 2-4-page sections covering specific military campaigns, regional impact and life on the home front. A timeline is included with sections covering topics spanning many years (for example, "The Turning Point" from December 1941 through January 1943, p. 130-131). The layout provides several other methods for understanding the event or theme, including dates and maps conveying the extent of territorial claims and conflicts. Large maps of continents are often accompanied by inset maps showing details for specific regions.



This atlas is also great for scholars and casual buffs of World War II. This book includes so many facts it is impossible for someone not to learn something new. The historical maps, photographs and original maps provide amazing detail and context to the events (as mentioned above) for a beginner, and likely provide a new story for any World War II armchair expert.

This atlas is recommended for readers spanning high school through advanced academic. It would be a valuable required resource in a high school or college global history course.

## Web Resources

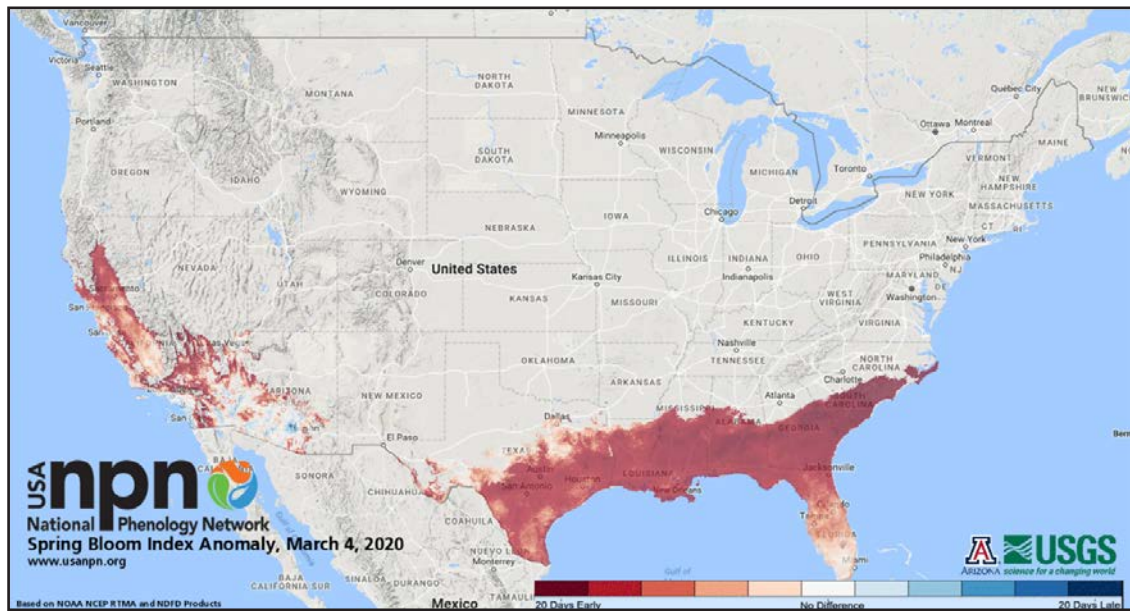
### USA National Phenology Network

<https://www.usanpn.org/home>

"The USA National Phenology Network was established in 2007 to collect, store, and share phenology data and information." – USA NPN About Us

"a branch of science dealing with the relations between climate and periodic biological phenomena (such as bird migration or plant flowering)" – Merriam-Webster, definition of *phenology*

Punxsutawney Phil didn't see his shadow on February 2, 2020. Legend dictates there will be an early spring (as opposed to six more weeks of winter). I write this on a dreary, snowy day in March here in Buffalo. It has been four weeks since Phil predicted winter was on the way out, and I'm seeking a more reliable resource to predict how long I will see these flakes. The Status of Spring maps from USA National Phenology Network do a much better job at visualizing the approach of spring than Pennsylvania's groundhog. According to their story published on March 3, spring lead is arriving three weeks earlier than the long-term average. The map GIF shows spring leaf advancing north – 20 days early in some locations. I plan to refer to their map in the coming weeks as I anxiously await spring leaves: <https://www.usanpn.org/news/spring>.



USA NPN has many more maps and data available. Data and visualizations cover invasive species and pest forecasts, heat accumulation and phenological transitions of animals and plants. The website also hosts “nature’s notebook” ([https://www.usanpn.org/natures\\_notebook](https://www.usanpn.org/natures_notebook)), a hub for citizen scientists’ to contribute their own seasonal changes tracking data.

I stumbled upon this website as I was searching for reassurance spring would eventually arrive. I will include this resource on my research guides, as the variety of data and maps will be useful for many disciplines my library serves.

### Mapping the Lives

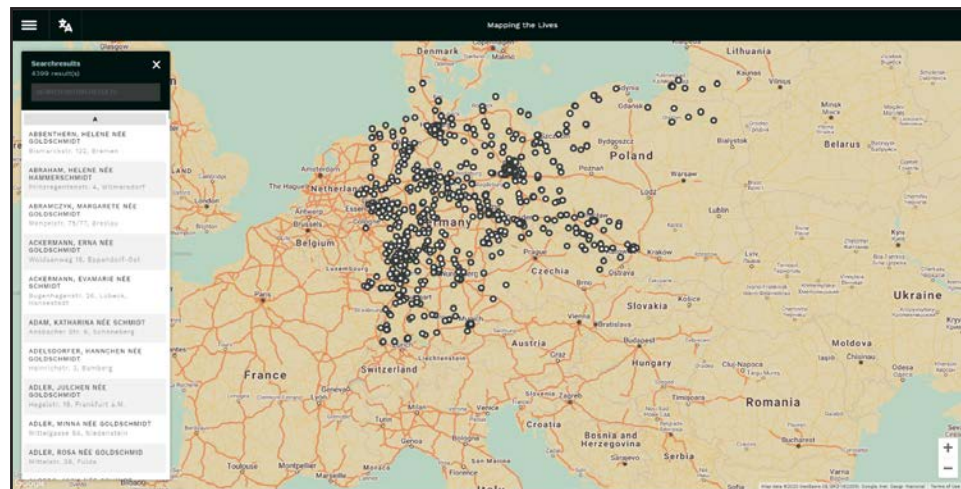
[www.mappingthelives.org](http://www.mappingthelives.org)

*World War II: Map by Map* highlights the stories of Holocaust victims with several maps and images. Accurately portraying the neighborhoods German minorities occupied and the vast extent of victims in Germany alone is a difficult task when confined to the pages of a book. This is where the web resource *Mapping the Lives* is a great tool. The interactive map charts the residential locations of Germans impacted by the Holocaust referenced from the 406,372 records from the 1939 Germany Minority Census and data from the German Federal Archives Residents’ List.

Users may search the database with as little information as a first, last or maiden name; a street with or without a specific number; and a city or town. There is an Advanced Search option which adds search fields for dates and places for birth, death, deportation, emigration, expulsion and imprisonment. Users can also search by of residences in specific quarters, countries, districts and states. The database and map may be searched and viewed in English or German. It is important to note the database will search variants of a name. For example, searching the last name Schmidt will bring results for Hammerschmidt, Goldschmidt and Goldschmid, as well.

Searching your known information will populate a list of citizens, with the corresponding instances appearing on the map. From there, users can click on the circles for each resident to jump to their record in the list, and click to view the complete record for that person. The data provided varies on each individual's circumstances, but basic information including birth place and location, gender, race, residence and persecution bias appear in most records. Many records include the additional line: "Died as a result of Nazi persecution".

The map uses present-day political boundaries and names. As such, the records used for the database map victims extending beyond Germany's current borders into annexed Austria and Sudetenland. This is useful for seeing where in our world today Holocaust



victims were persecuted, but may cause some confusion when searching for ancestors known to have lived in areas that have been renamed.

Map readers are encouraged to read the accompanying User Guide page for clarification of terms used in the records, detailed instructions for searching and a disclaimer regarding the accuracy of the database.

*Mapping the Lives* was created by Tracing the Past, a non-profit organization dedicated to memorializing those persecuted in Europe during the years 1933-1945. Their ultimate goal with the map is "for you to be able to walk down any street in Europe and learn the Holocaust history of that specific place". The project plans to integrate the map and database for use on mobile devices in the future.

## Conclusion

I am now working from home, as most of us are. Luckily, I had the foresight to pack my shelf of 12 atlases waiting for review into my car the day before we were told to leave. Our library has postponed print purchasing in an effort to support our faculty and students working remotely. I may finish reviewing the print atlases I brought home before we return to normal purchasing. Please forgive me as I stumble through reviewing newly released atlases in eBook format in the coming months.



## From the Editor's Keyboard



### Digital Mapping editor needed

Do you enjoy finding and looking at new GIS programs, geospatial data, and websites? Do you enjoy writing? Then why not combine the two together and be our new Digital Mapping columnist. Tell us about the new geospatial sites that are available.

I would like to encourage any MAGIRT member to volunteer. Let me know if you have an interest in contributing to this important part of *base line*.

Contact me for more details. This is a wonderful opportunity for someone to make a concrete and impactful contribution to our part of the library profession.

**Missouri State.**

## JIM COOMBS TO RETIRE AFTER 40 YEARS OF SERVICE

📅 March 12, 2020 👤 Tom Peters

Jim Coombs, Associate Professor of Library Science and the Maps and GIS Librarian at the Missouri State University Libraries, plans to retire at the end of this academic year. He is the only maps librarian in the state of Missouri. Jim has served generations of users of the MSU Libraries for 40 years!

A retirement reception is being planned for July. The exact date, time, and location will be announced soon.

Congratulations, Jim!



GREAT MOMENTS IN MAP LIBRARIANSHIP by Jim Coombs

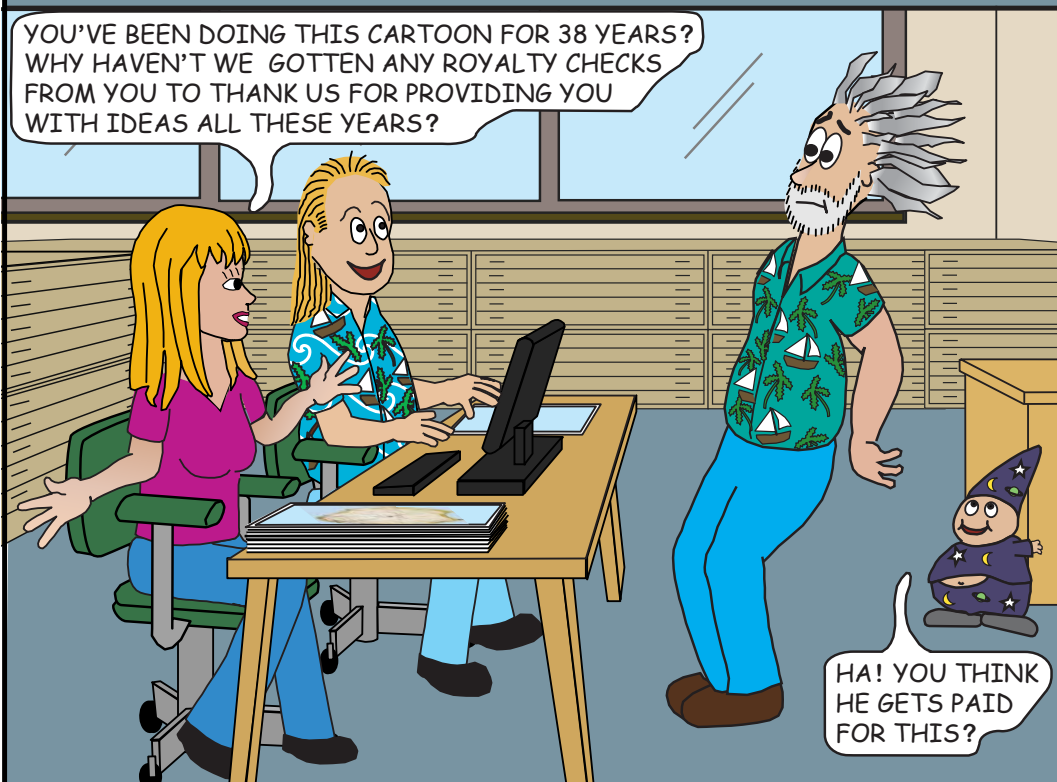
HI! DO YOU NEED HELP FINDING A MAP?

NO, I'M THE GUY WHO'S BEEN DRAWING THIS CARTOON SINCE 1982. I THOUGHT IT WOULD BE FUN TO VISIT YOU GUYS!



© JIM COOMBS 4/20

YOU'VE BEEN DOING THIS CARTOON FOR 38 YEARS? WHY HAVEN'T WE GOTTEN ANY ROYALTY CHECKS FROM YOU TO THANK US FOR PROVIDING YOU WITH IDEAS ALL THESE YEARS?



HA! YOU THINK HE GETS PAID FOR THIS?