

SUPPORT STAFF MEMBERSHIP IN ALA DIVISIONS

- American Association of School Librarians (AASL) **\$62**
- Association for Library Service to Children (ALSC) **\$35**
- Association of College and Research Libraries (ACRL) **\$68**
- Core: Leadership, Infrastructure, Futures **\$40**
- Public Library Association (PLA) **\$77**
- Reference and User Services Association (RUSA) **\$33**
- United for Libraries **\$55**
- Young Adult Library Services Association (YALSA) **\$27**

SUPPORT STAFF MEMBERSHIP IN ALA ROUND TABLES

- Ethnic and Multicultural Information Exchange (EMIERT) **\$20**
- Exhibits (ERT) **\$15**
- Film and Media (FMRT) **\$20**
- Gaming (GAMERT) **\$10**
- Government Documents (GODORT) **\$20**
- Graphic Novel and Comics (GNCRT) **\$5**
- Intellectual Freedom (IFRT) **\$15**
- International Relations (IRRT) **\$15**
- Learning (LEARNRT) **\$20**
- Library History (LHRT) **\$20**
- Library Instruction (LIRT) **\$15**
- Library Research (LRRT) **\$15**
- Library Support Staff Interests (LSSIRT) **\$10**
- Map and Geospatial Information (MAGIRT) **\$20**
- New Members (NMRT) **\$15**
- Rainbow (RRT) **\$15**
- Retired Members (RMRT) **\$20**
- Social Responsibilities (SRRT) **\$15**
- Staff Organizations (SORT) **\$3**
- Sustainability (SustainRT) **\$10**

ALA
MEMBERSHIP

American
Library
Association

LIBRARY SUPPORT STAFF PERSONAL MEMBERSHIP

Supporting you, your library, and your profession



**LIBRARIES
TRANSFORM[®]**

Visit ala.org/membership
and join today.

JOIN US!

Find us online:



Find us online:

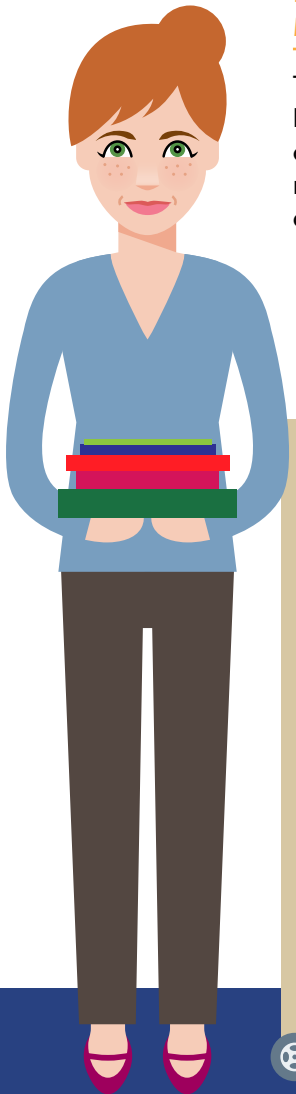


ALA
MEMBERSHIP

American
Library
Association

Become an ALA Support Staff Member

Library Support Staff play a vital role in the everyday mission of the library serving the common good through providing access to information and services in the community—and are integral to ALA’s membership. ALA provides a home for support and paraprofessional staff, offering professional development tools and resources for job growth.



LIBRARY SUPPORT STAFF MEMBERSHIP—\$53

This includes those employed in library and information services or related activities that do not require a MLIS degree or state certification.

RELEVANT RESOURCES AND BENEFITS

- Member pricing on Library Support Staff Certification Program (LSSC)—recognizing the achievement of library support staff who work in libraries.
- Library Support Staff Interests Round Table (LSSIRT) exclusively addresses issues of concern and topics of interest to library support staff, including training programs, education, career development, and job responsibilities. Join LSSIRT for an additional \$10.
- Find Your Community + Specialties through ALA Divisions & Round Tables. You will find specialized resources you need through our specialized and professional community of ALA Divisions and Round Tables. Connect with others by adding them to your member dues.
- Discounts on Products and Services. Save money on a variety of products and services as you grow and learn throughout your career.
- Special rates for ALA Members on conference registration and online professional development
- Numerous Free and Discounted Publications. Receive the latest news about developments that affect libraries, along with the informed analysis and advice you need for your career.
- Access to ALA Connect—an online platform for discussion and collaboration between ALA members, whether working as part of a formal ALA committee or just sharing questions and ideas with other library professionals.

JOIN NOW! Visit www.ala.org/membership; call 800-545-2433 for our Member and Customer Service Center; or mail the attached application.

Personal Information

PREFIX FIRST NAME MI LAST SUFFIX

JOB TITLE OR CURRENT POSITION

Employment Address

PLACE OF EMPLOYMENT

STREET

CITY

STATE/PROV

ZIP/PC

COUNTRY

WORK PHONE

EMAIL

Home Address

STREET

CITY

STATE/PROV

ZIP/PC

HOME PHONE

Select Your Support Staff Membership

- ALA Support Staff Membership – \$53
 Library Support Staff Interests Round Table (LSSIRT) – \$10
(Any personal ALA member may join the LSSIRT)

Send ALA billing to: Work Home

Send ALA mail to: Work Home

To ensure you receive timely and useful information from ALA units and carefully screened outside organizations, and that you receive only the types of information you want, please indicate your communication preferences below:

From ALA and outside organizations: Just ALA Official

Please choose a format: Email Paper Either

Payment Method

A check is enclosed for \$_____, payable to the American Library Association

Charge \$_____ to: VISA MasterCard AMEX

CARD NUMBER

EXPIRATION DATE

NAME ON CARD

SIGNATURE

PLEASE RETURN WITH PAYMENT TO:

ALA MEMBERSHIP
6499 NETWORK PLACE, CHICAGO, IL 60673, U.S.A.

MDFY21